

=> d his .

(FILE 'HOME' ENTERED AT 18:46:04 ON 02 MAY 2005)

FILE 'CAPLUS' ENTERED AT 18:46:10 ON 02 MAY 2005

L1 1 S WO2000031112/PN
SELECT L1 1 RN
L2 229 S E1-E32

FILE 'REGISTRY' ENTERED AT 18:46:54 ON 02 MAY 2005

L3 1 S 14114-05-7/RN
SET NOTICE 1 DISPLAY
SET NOTICE LOGIN DISPLAY

FILE 'REGISTRY' ENTERED AT 18:47:13 ON 02 MAY 2005

L4 1 S 1530-33-2/RN
SET NOTICE 1 DISPLAY
SET NOTICE LOGIN DISPLAY

FILE 'REGISTRY' ENTERED AT 18:47:42 ON 02 MAY 2005

L5 1 S 191486-99-4/RN
SET NOTICE 1 DISPLAY
SET NOTICE LOGIN DISPLAY

FILE 'REGISTRY' ENTERED AT 18:48:08 ON 02 MAY 2005

L6 1 S 271259-86-0/RN
SET NOTICE 1 DISPLAY
SET NOTICE LOGIN DISPLAY

FILE 'REGISTRY' ENTERED AT 18:49:05 ON 02 MAY 2005

L7 1 S 271259-99-5/RN
SET NOTICE 1 DISPLAY
SET NOTICE LOGIN DISPLAY

FILE 'REGISTRY' ENTERED AT 18:49:50 ON 02 MAY 2005

L8 1 S 271260-11-8/RN
SET NOTICE 1 DISPLAY
SET NOTICE LOGIN DISPLAY

=> s wo2000031112/pn
L1 1 WO2000031112/PN
(WO2000031112/PN)

=> select l1
ENTER ANSWER NUMBER OR RANGE (1-):1
ENTER DISPLAY CODE (TI) OR ?:rn
E1 THROUGH E32 ASSIGNED

=> s e1-e32

91 14114-05-7/BI
140 1530-33-2/BI
2 191486-99-4/BI
1 271259-86-0/BI
1 271259-87-1/BI
1 271259-88-2/BI
1 271259-89-3/BI
1 271259-90-6/BI
1 271259-91-7/BI
1 271259-92-8/BI
1 271259-93-9/BI
1 271259-94-0/BI
1 271259-95-1/BI
1 271259-96-2/BI
1 271259-97-3/BI
1 271259-98-4/BI
1 271259-99-5/BI
1 271260-00-5/BI
1 271260-01-6/BI
1 271260-02-7/BI
1 271260-03-8/BI
1 271260-04-9/BI
1 271260-05-0/BI
1 271260-06-1/BI
1 271260-07-2/BI
1 271260-08-3/BI
1 271260-09-4/BI
1 271260-10-7/BI
1 271260-11-8/BI
1 271260-12-9/BI
2 50681-33-9/BI
2 55592-30-8/BI

L2 229 (14114-05-7/BI OR 1530-33-2/BI OR 191486-99-4/BI OR 271259-86-0/
BI OR 271259-87-1/BI OR 271259-88-2/BI OR 271259-89-3/BI OR
271259-90-6/BI OR 271259-91-7/BI OR 271259-92-8/BI OR 271259-93-
9/BI OR 271259-94-0/BI OR 271259-95-1/BI OR 271259-96-2/BI OR
271259-97-3/BI OR 271259-98-4/BI OR 271259-99-5/BI OR 271260-00-
5/BI OR 271260-01-6/BI OR 271260-02-7/BI OR 271260-03-8/BI OR
271260-04-9/BI OR 271260-05-0/BI OR 271260-06-1/BI OR 271260-07-
2/BI OR 271260-08-3/BI OR 271260-09-4/BI OR 271260-10-7/BI OR
271260-11-8/BI OR 271260-12-9/BI OR 50681-33-9/BI OR 55592-30-8/
BI)

=> FIL REGISTRY

COST IN U.S. DOLLARS	SINCE FILE ENTRY	TOTAL SESSION
FULL ESTIMATED COST	62.90	63.11

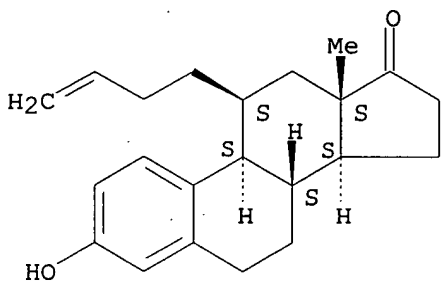
FILE 'REGISTRY' ENTERED AT 18:46:54 ON 02 MAY 2005
USE IS SUBJECT TO THE TERMS OF YOUR STN CUSTOMER AGREEMENT.
PLEASE SEE "HELP USAGETERMS" FOR DETAILS.
COPYRIGHT (C) 2005 American Chemical Society (ACS)

Property values tagged with IC are from the ZIC/VINITI data file
provided by InfoChem.

STRUCTURE FILE UPDATES: 1 MAY 2005 HIGHEST RN 849587-91-3

L6 ANSWER 1 OF 1 REGISTRY COPYRIGHT 2005 ACS on STN
RN 271259-86-0 REGISTRY
CN Estra-1,3,5(10)-trien-17-one, 11-(3-butenyl)-3-hydroxy-, (11 β)- (9CI)
(CA INDEX NAME)
FS STEREOSEARCH
MF C22 H28 O2
SR CA
LC STN Files: CA, CAPLUS
DT.CA Caplus document type: Patent
RL.P Roles from patents: RACT (Reactant or reagent)

Absolute stereochemistry.



PROPERTY DATA AVAILABLE IN THE 'PROP' FORMAT

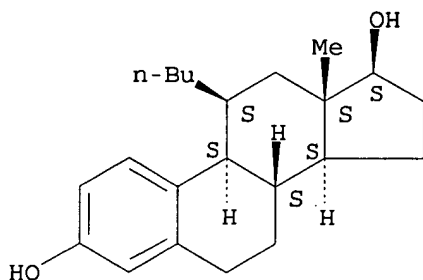
1 REFERENCES IN FILE CA (1907 TO DATE)
1 REFERENCES IN FILE CAPLUS (1907 TO DATE)

=> D L8 SQIDE 1-

YOU HAVE REQUESTED DATA FROM 1 ANSWERS - CONTINUE? Y/(N):y
THE ESTIMATED COST FOR THIS REQUEST IS 6.15 U.S. DOLLARS
DO YOU WANT TO CONTINUE WITH THIS REQUEST? (Y)/N:y

L8 ANSWER 1 OF 1 REGISTRY COPYRIGHT 2005 ACS on STN
RN 271260-11-8 REGISTRY
CN Estra-1,3,5(10)-triene-3,17-diol, 11-butyl-, (11 β ,17 β)- (9CI)
(CA INDEX NAME)
FS STEREOSEARCH
MF C22 H32 O2
SR CA
LC STN Files: CA, CAPLUS
DT.CA Caplus document type: Patent
RL.P Roles from patents: BIOL (Biological study); PREP (Preparation); USES
(Uses)

Absolute stereochemistry.



PROPERTY DATA AVAILABLE IN THE 'PROP' FORMAT

1 REFERENCES IN FILE CA (1907 TO DATE)
1 REFERENCES IN FILE CAPLUS (1907 TO DATE)